

ARC Resource Center & Food Pantry Annual Report

FY 2025 (July 1, 2024 - June 30, 2025)



PimaCommunityCollege
ARC Resource Center
and Food Pantry



EXECUTIVE SUMMARY

Aligned with Pima Community College's mission, "Empower every learner, every day, for every goal", the ARC serves PCC's diverse population of learners by supporting their basic needs.

According to the Hope Center's Student Basic Needs Survey conducted at Pima Community College:

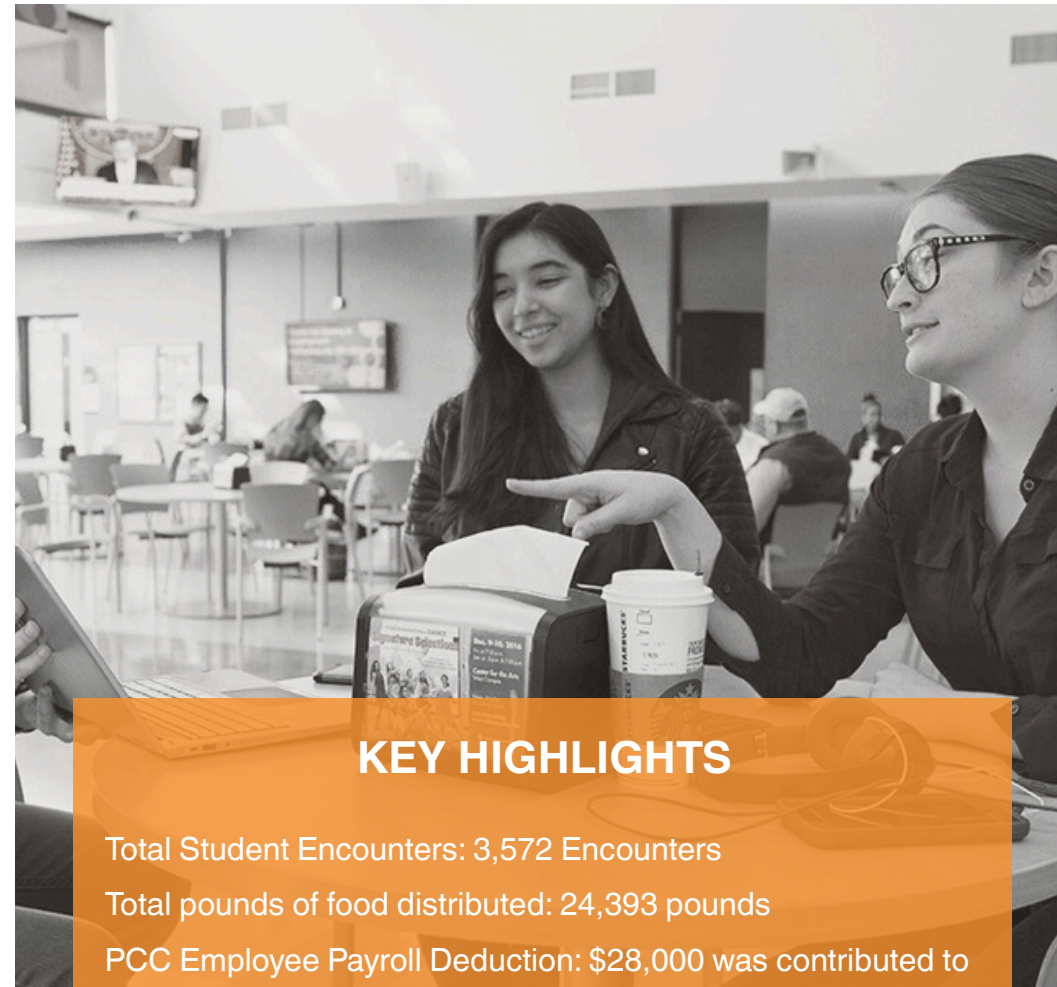
- Students in higher education are increasingly experiencing food insecurity.
- Basic needs insecurity is particularly prevalent among students who have the greatest trouble accessing and affording higher education
- 79% of students who had previously dropped out of college (and subsequently re-enrolled), or were considering dropping out of college, told us it was due to basic needs insecurity or financial reasons.

Often an unseen challenge due to stigma, food insecurity may go unnoticed by academic institutions. Higher education institutions have the ability to increase the number of students completing college by supporting their basic needs. PCC students who utilize the ARC have stated:

[The ARC] has definitely taken the stress off of having to spend more of my money on food. Usually towards the end of the month it would get hard to buy the things I needed. It's nice to know I have a place I can get food even when money is tight.

When money is low in my household, being able to go to [the ARC] while also going to class makes me more likely to go to class.

Supporting students' basic needs will increase attainment of educational goals and outcomes, enabling them to be more healthy and productive members of our community.



KEY HIGHLIGHTS

Total Student Encounters: 3,572 Encounters

Total pounds of food distributed: 24,393 pounds

PCC Employee Payroll Deduction: \$28,000 was contributed to the ARC through Pima Foundation

Grant Awards: Thriving Communities (\$11,800), and Swipe Out Hunger (\$6,000).

Fundraising: Raised over \$5,000 at PCC to host annual Winter Wonder Bag Event; Raised over \$1,500 in Spring Friendraiser

Advocacy & Representation: ARC staff and student leaders participated in Anti-Hunger Day in Phoenix and the national Anti-Hunger Conference in Washington, D.C.

OUR MISSION & VISION

The ARC Resource Center & Food Pantry's mission is to address food insecurity by providing free, low-barrier supplemental food bags, essential hygiene items and resource referrals to PCC students and staff.

The ARC's Vision is a campus community where:

- no student has to choose between learning and meeting their basic needs
- students can be successful in achieving their educational goals, in spite of financial barriers
- students are empowered to access resources without shame, judgement or stigma

"It's helped put my mind at ease knowing my family can snack or eat a little more while I'm unable to work/finishing college."

- ARC Student User

OUR VALUES

- Basic needs are basic rights
- Everyone deserves access to food
- Hunger is preventable
- Culturally appropriate food and produce is a priority
- No one leaves empty handed
- Respect the dignity and worth of all students
- Utilize trauma informed services and practices
- Meet students where they are



MEASURING OUR MARK



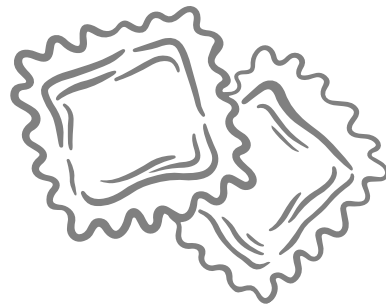
57.3% of ARC student users are Pell Grant eligible



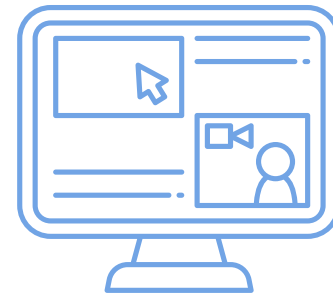
86.8% of ARC Student users successfully complete their courses



43% of ARC users are first-generation students



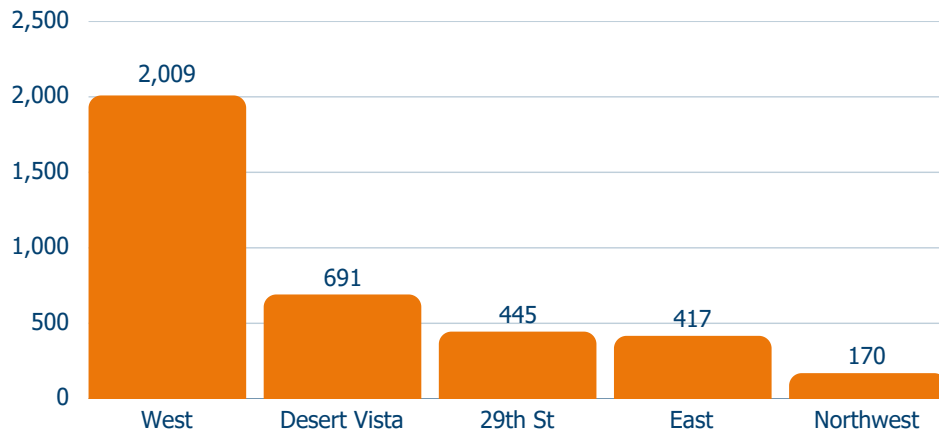
Students visit the ARC an average of **3 times a month**



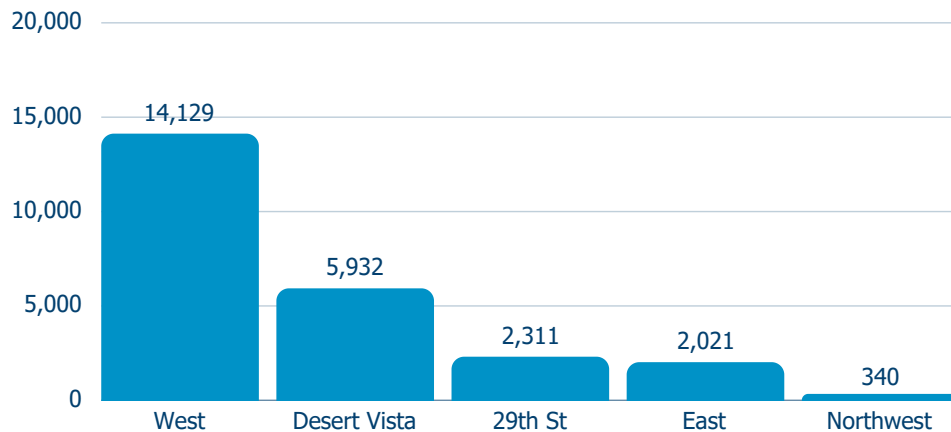
251 Pima Online students used ARC services at least once

A YEAR IN REVIEW

Student Encounters by Campus



Pounds of Food Distributed by Campus



FY25 Total Student Encounters

3,572 Encounters

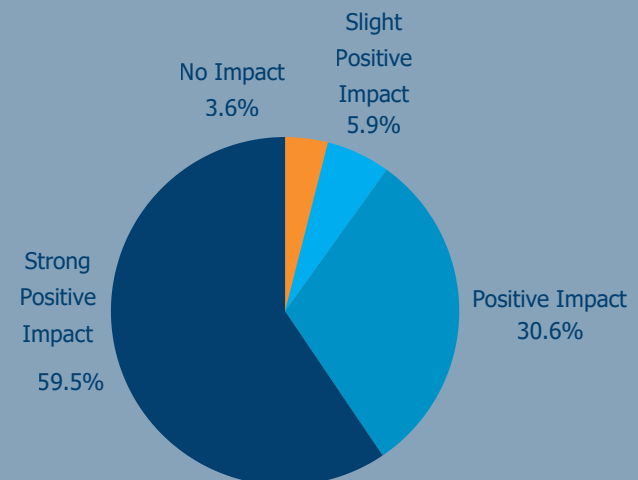
FY25 Total Lbs. Food Distributed

24,393 lbs

ARC Services & Student Impact: Student Satisfaction Survey

“What impact do you feel the resources provided by the ARC have on your academic performance (ex. grades, attendance, class completion/withdrawal) at Pima Community College?”

Student Responses



MAJOR MOMENTS

Health & Wellness Resource Event:

- Held each Fall & Spring at the West Campus
- Agencies centered around basic needs services (housing/utility assistance, supplemental food assistance, mental & behavioral health services)
- Over 300 students participated in this year's events
- Partner agencies include: PCC Dental, Interfaith Community Services, SAAF, the Community Food Bank of Southern AZ, and more



Refugee Education Program (REP) Initiative (29th St. Center):

- The ARC provided culturally responsive food items and fresh produce to students enrolled in the Refugee Education Program
- Funding was awarded through a Swipe Out Hunger Grant and a collaborative grant from the Community Food Bank of Southern Arizona with Iskashitaa Refugee Network and REP
- ARC staff and interns conducted student focus groups at 29th, which provided crucial cultural and socio-economic insights into the needs of this marginalized population
- In addition, ARC interns created a basic needs Resource Repository based on the 29th St. location so that refugee students were better connected to community resources



MAJOR MOMENTS

Winter Wonder Bags:

- Winter Wonder Bags gave PCC students a supplemental holiday meal option over the winter break
- Raised over \$5,000 from community & PCC employee donations
- Bags contained a \$15 voucher to purchase a holiday turkey, ham or veggie tray and included mashed potatoes, gravy, stuffing, biscuit mix, canned fruits and veggies
- 200 Winter Wonder Bags were distributed in December at the West and Desert Vista campuses

National Anti-Hunger Conference:

- Two ASU interns, along with the ARC Program Coordinator, attended the 2025 National Anti-Hunger Policy Conference (AHPC) in Washington DC
- Conference included innovative advocacy methods for fighting hunger in communities and on college campuses
- Met with House of Representatives District 6 Congressman Juan Ciscomani to bring attention to PCC student food insecurity



ADDITIONAL EVENTS

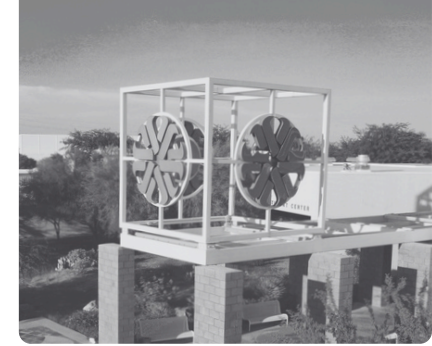
The ARC continues to expand its reach to PCC students each year-- providing opportunities for collaboration and growth not only internally at PCC, but through the community as well.

Additional events and initiatives in FY25 include:

- All College Day Hygiene Drive (in collaboration with PCC Hygiene Closet)
- Pet Food Distribution Project
- Student Senate Project - College-wide Hygiene Drive
- Student LEAD Project - Northwest Pop Up Pantry
- University of Arizona (UA)/ARC Community Food Drive (In collaboration with LA Fitness)
- UA Festival of Books Food Drive
- ARC Friendraiser
- Administered Student Satisfaction Survey
- Desert Vista (DV) Spring Fest Committee & Tabling
- DV Turkey Trot and Food Drive for Winter Wonder Bags
- Attended Anti-Hunger Day at the Arizona Capitol in Phoenix, AZ
- Ongoing Donation Bins at PCC Faculty Resource Centers (FRCs)
- Received in-kind donations from the following businesses as prizes for payroll raffles: Hotel McCoy, Crayola, Mister Carwash, Odysea Aquarium, Gaslight Theater
- Arizona Higher Education Food Coalition
- Provided outreach at the Heirloom Farmers Market (in collaboration with UA)
- World Refugee Day Event Committee partner

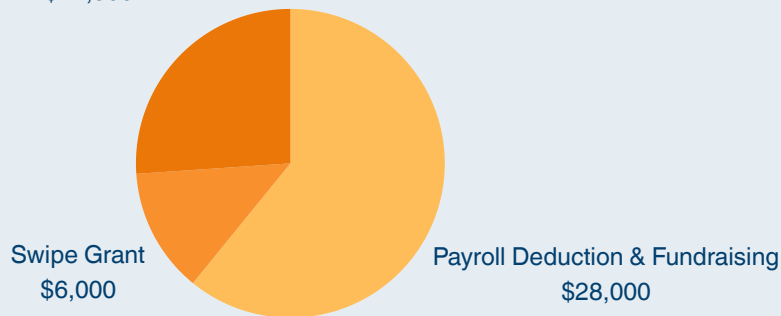
FUNDING/REVENUE & EXPENSES

The ARC's primary source of funding is through the PCC Payroll Deduction program. 100% of payroll deduction funds go directly to purchasing food/hygiene items and related programming costs. Currently, the Connie Hillman Foundation provides a direct \$0.50 match for every dollar raised (including increases by current payroll deduction employees).



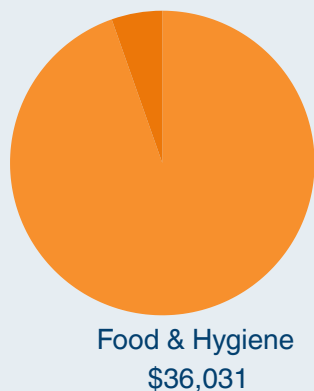
PROGRAM REVENUE

Thriving Communities Grant
\$12,000



PROGRAM EXPENSES

Other (grant fees, office items, etc)
\$2,054



ANNUAL OPERATING REVENUE

Contributions - Programs	\$45,495.01
Contributions - In-Kind	\$18,266.84
Personnel - ARC (Designated Fund)	\$49,051.00
Personnel - Social Sciences (Instructional Fund)	\$119,000.00
Total Revenue	\$231,812.85

ANNUAL OPERATING EXPENSES

Expenses - Programs	\$37,826.06
In-Kind Gifts & Gift Fees	\$18,516.92
Personnel - ARC (Designated Fund)	\$49,051.00
Personnel - Social Sciences (Instructional Fund)	\$119,000.00
Total Expenses	\$224,393.98

THE ARC'S LEARNING LAB MODEL

The ARC serves as a Learning Lab for students through practical and experiential learning. ARC operates within the Social Services department and Social Sciences, Humanities, and Education Division.

The ARC Learning Lab model provides an accessible, college-wide opportunity across all disciplines for students to extend classroom learning theory into practice. The experiential learning opportunity offered through ARC is considered a “high-impact practice” by the American Association of Colleges & Universities (AACU). According to the AACU, this type of learning has significant benefits to students especially those in “demographic groups historically underserved by higher education,” as it provides opportunities for applied analysis and problem-solving regarding topics studied in the classroom.

The ARC is providing career training and educational opportunities for PCC and ASU students (BSW & first year MSW) with supervision by Social Services faculty member Rachael Lord in a direct-practice setting.



Student Interns & Volunteers

1 ASU Bachelor's of Social Work Intern

1 ASU Master's of Social Work Intern

2 Federal Work Study Students

2 Social Services Shadowing Students

3 Student Scholarship Recipient Volunteers

UPCOMING PRIORITIES

The ARC's priorities for FY26 include:

- Sustainable funding sources
 - grants
 - fundraising/payroll deduction
 - endowment fund
- Student outreach/engagement to increase visibility and decrease stigma
- Increasing staff needs due to
 - Increase in ARC student usage
 - Additional distribution sites
 - Expansion of operating hours
 - Increase in PCC/community engagement activities
- Plan for federal funding cuts to basic needs services/resources in 2025-2026
- Meeting Thriving Communities Grant deliverables to support PCC REP
- Maintain current PCC/community partnerships
 - Iskashitaa Refugee Network
 - UA
 - LA Fitness
 - Health & Wellness agency partners
 - PCC Dental Program
 - PCC TRiO



MEET THE TEAM

Leigh Ann Rangel - Academic Director, Social and Behavioral Health Sciences

Rachael Lord - Faculty Lead, Social Services Department

Susan Ho - Program Coordinator, ARC Resource Center & Food Pantry

Cory Englert - Specialist, ARC Resource Center & Food Pantry

Dair Garcia - Federal Work Study Student, ARC Resource Center & Food Pantry

Mahriza Pinon Manriquez - Federal Work Study Student, ARC Resource Center & Food Pantry

Amanda Ortega - Intern, Arizona State University School of Social Work

Aimee Meyers - Intern, Arizona State University School of Social Work



FY25 ANNUAL REPORT



PimaCommunityCollege
**ARC Resource Center
and Food Pantry**